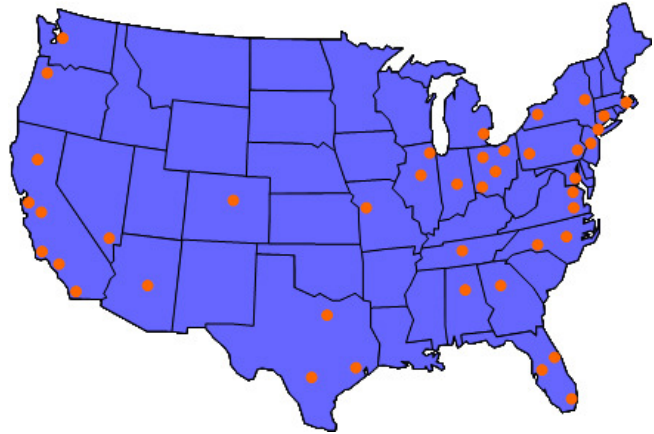


Turner Construction Company is recognized as the leading general builder in the U.S. The company's 5,000 employees perform work on more than 1,100 building projects each year. According to *Engineering News-Record's* 2009 Top 400 Contractors Sourcebook, Turner is the nation's largest builder in the green, healthcare, education, sports and correctional facilities markets.

SERVICES

Turner maintains a network of 46 local offices in the U.S. and a presence in 20 countries. Turner also operates national segment groups, which focus on a particular building type, to complement the firm's geographical network of offices. These include Green Building, Healthcare, Pharmaceutical and Biotechnology, Public Assembly, Sports and Aviation. This structure provides clients with the in-depth skills and experience needed in specialized facility types and the strength and understanding that come from a strong local market presence.

In addition to its construction management services, Turner's portfolio of service offerings include Turner Logistics, dedicated to supply chain management, and Facility Management Solutions (FMS), designed to minimize operating costs by providing broad range of facility support services to Turner clients.



SAFETY

Turner promotes an injury-free environment and provides a safe workplace for its employees, clients, vendors and surrounding community. We are proud of the recognition we have received for our safe building practices, including the 2008 Construction Safety and Excellence Award from the Associated General Contractors of America.

GREEN BUILDING

Turner is the largest Green builder in the country and is committed to the increased adoption of sustainable construction practices. Turner also has more LEED Accredited Professionals on staff than any other construction management firm in the country. Turner has completed more than 140 United States Green Building Council (USGBC) LEED Certified projects and has completed or is working on more than 180 additional projects that are registered with the USGBC. Turner has completed or has under contract more than 400 projects with Green building elements.

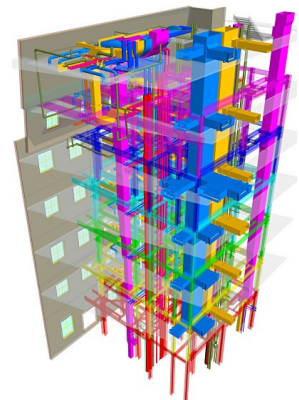
COMMUNITY INVOLVEMENT

Turner is committed to supporting communities in areas where we do business. In 1968, Turner was the first major builder to establish a formal community affairs department. Turner's involvement embraces hundreds of volunteer programs, such as the ACE Mentor program, Habitat for Humanity and United Way, numerous local and national nonprofits and Youth Force 2020, a program instituted by Turner to support education and to guide youth toward careers in the construction industry.

Since 1979, Turner's total awards to minority and women's business enterprises (M/WBEs) and involvement with M/WBE joint venture partnerships has exceeded 52,000 contracts with a value of \$18 billion. For the fifth year in a row, the company has awarded contracts in excess of \$1 billion to M/WBE firms.

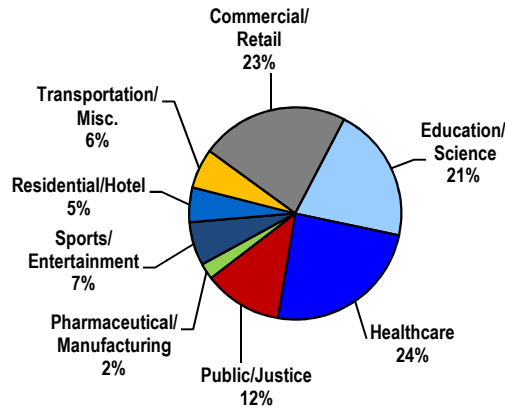
BUILDING INFORMATION MODELING

Building Information Modeling (BIM) and Virtual Design and Construction (VDC) are transforming the construction industry. Virtual design and construction is the process of using BIM as a process and a tool in the design, pre-construction, construction or operational phase of a building or facility. Turner has approximately \$30 billion of activity on 170 projects that are utilizing BIM. Turner has grown to be the leading adopter of BIM technology in the construction industry in the U.S. and in the top 10 among all firms according to a recent *Building Design + Construction* magazine survey.



FINANCIALS

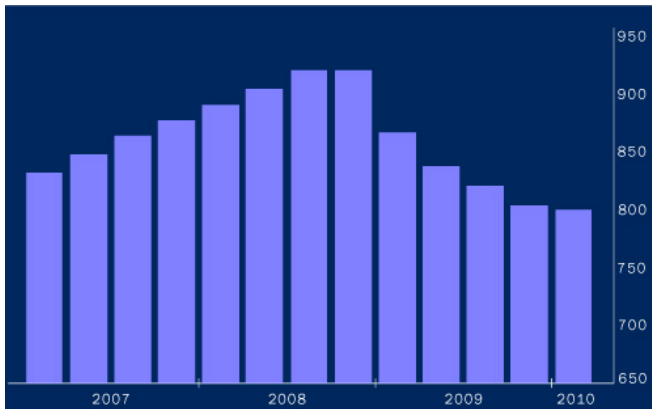
Turner completed \$8.2 billion of construction in 2009.



NOTABLE PROJECTS

- Yankee Stadium, Bronx, N.Y.
- NASCAR Hall of Fame, Charlotte, N.C.
- Burj Khalifa, Dubai, U.A.E., the tallest building in the world
- U.S. Army Corps of Engineers, Sustainment Center of Excellence at Fort Lee, Va.
- The Hearst Tower, an award winning, a 46-story LEED Gold Certified commercial high-rise, New York, N.Y.
- Sacramento International Airport Terminal B Modernization Program –Airside Concourse project, Sacramento, Calif.
- The Art Institute of Chicago, Modern Wing, Chicago, Ill.
- The Memorial Sloan-Kettering Mortimer B. Zuckerman Research Center and the Memorial Sloan-Kettering Breast and Imaging Center, New York, N.Y.
- National World War II Memorial, Washington, D.C.
- The Lincoln Center Development Project, renovation of the Julliard School and Alice Tully Hall, New York, N.Y.
- Stanford University Graduate School of Business, designed and being constructed to achieve a LEED Platinum Certification, Palo Alto, Calif.
- Great American Tower at Queen City Square, Cincinnati, Ohio
- Yale-New Haven Hospital North Pavilion / Cancer Hospital, New Haven, Conn.

TURNER BUILDING COST INDEX



The First Quarter 2010 Turner Building Cost Index, which measures non-residential building construction costs in the United States, has decreased by 0.5% from the Fourth Quarter 2009 and decreased 7.74% from the First Quarter 2009. Construction costs have decreased by 13.06% since their peak at the end of 2008. The index value for First Quarter 2010 is 799.

The Cost Index is determined by several factors on a national basis, including labor rates and productivity, material prices and the competitive condition of the marketplace. This index does not necessarily conform to other published indices because others do not generally take all of these factors into account.

CONTACT INFORMATION

Chris McFadden, Vice President Communications, 212-229-6145, cmcfadden@tcco.com
 Shannon Eckhart, Public Relations Manager, 212-229-6084, seckhart@tcco.com
 Website: www.turnerconstruction.com